



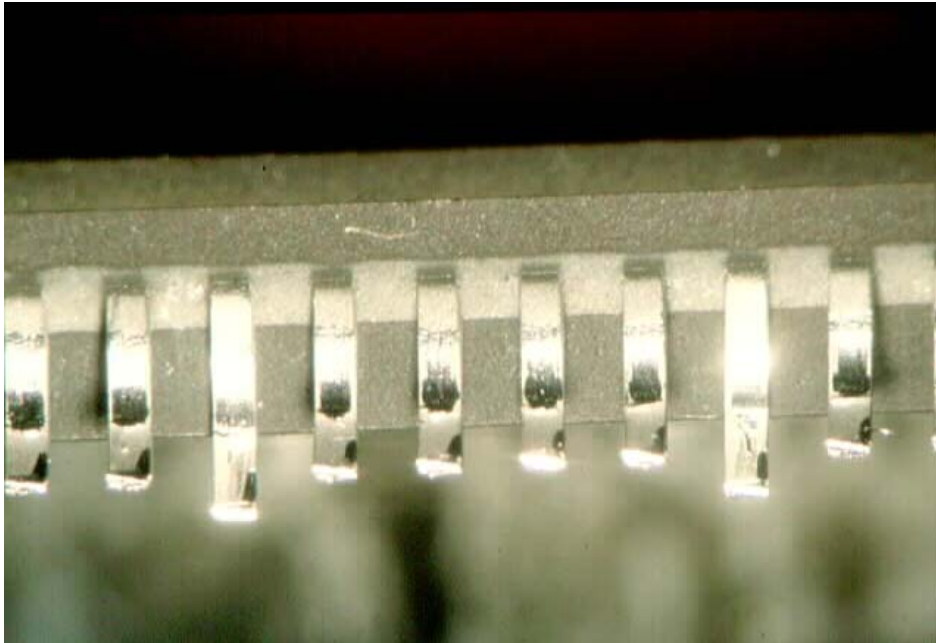
www.ppm-monitoring.com



Process Defect Guide

Sheet Ref: Pc18tf

Plastic Cracking



All high pin count components should meet the minimum quality standard of JEDEC, the industry specification for this type of component. The leads should all be on one plane or within ± 0.002 ". If the parts when supplied are like the example, which is clearly outside this specification, they should be rejected.

The most common cause of lead position problems is during handling between the manufacturer to the end user or from a distributor. The problem is also often seen in contract manufacture where a customer insists on sourcing the parts adding another link in the chain.